

# eSys-SVC3 xt

Robust and high performance ASIL-C ECU



# eSys-SVC3 xt

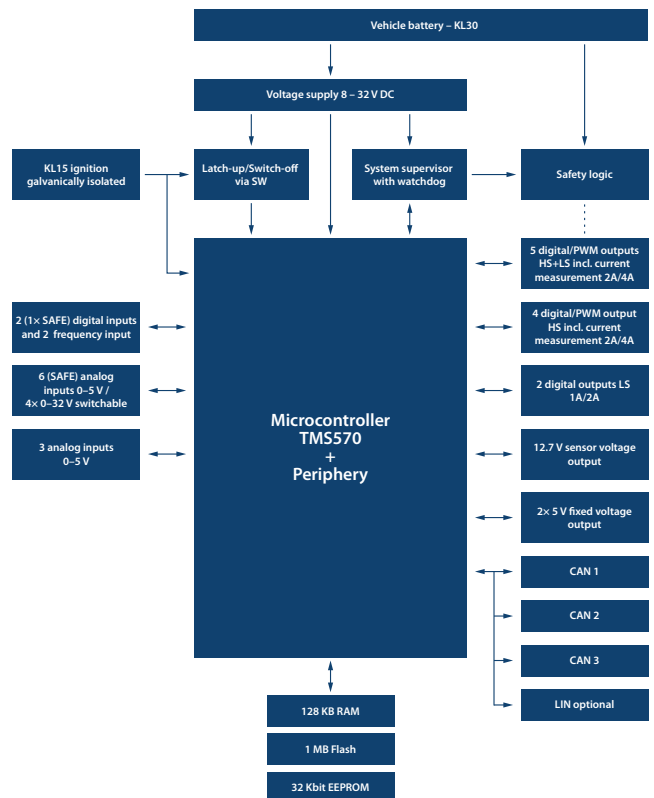


eSys-SVC3 is a powerful electronic control unit for safety-related applications up to ASIL-C. A rugged construction and a wide range of applications facilitate an optimal use in mobile machines. For this, three CAN, an optional LIN interface and up to 32 inputs and outputs with various diagnostic features are available.

## Key Features

- ASIL-C
**Scalable safety controllers up to ASIL-C (acc. to ISO 26262)**
- 32 bit
**High performance 32-bit Dual-Core Microcontroller**
- CAN
**3× CAN interface acc. to ISO 11898**
- lin
**1× LIN optional**
- ↻
**Number of IOs: 13 inputs, 19 outputs**
- 🌀
**AUTOSAR compliant**
- 🔗
**Robust aluminium housing with automotive connectors**

## Block Diagram



## Technical Data

### CPU

CPU	32-bit microcontroller dual-core, 160 MHz
RAM	128 KB internal
Memory	1 MB internal

### Interfaces & Inputs/Outputs

CAN	3× CAN interface accord. to ISO 11898 and CAN 2.0 B
LIN	1× optional
Analog inputs, Pulldown 0–5 V and 0–32 V	9× (6× SAFE); 0–5 V and 0–32 V
Digital inputs or RPM inputs	2× (1× SAFE)
Pulse inputs	2×
PWM/HSS/LSS outputs	9× (5× SAFE) current range highside 0 to 4.0 A, pulse frequency 0; 50 to 500 Hz 7× (5× SAFE) current range lowside 0 bis 4.0 A
Fixed voltage output	2× 5 V, stabilized supply voltage, short-circuit proof
Sensor voltage output	1× 12.7 V (optional)

### Housing

Plug	154-pin connector
Housing	IP68 (opt. IP6K9K), die-cast aluminium
Dimensions (l×w×h)	approx. 170 mm × 214 mm × 34 mm
Operating temperature	–40 °C to +85 °C housing temperature
Storage temperature	–40 °C to +90 °C housing temperature

### Supply Voltage

Supply voltage	8–32 V (12 V or 24 V board version)
Power consumption	Quiescent current approx. 2.8 mA at 28.5 V, total current up to 41 A





**Mobile Automation**



**Industrial Automation**



**Diagnostics**



**Connectivity**

**We are looking forward to your enquiry!**

**Sontheim Electronic Systems L.P.**

201 West 2nd Street  
52801 Davenport, USA  
Phone: +1 563 888 1471  
Fax: +1 934 3384  
Email: [info@sontheim-esys.com](mailto:info@sontheim-esys.com)

**Sontheim Industrie Elektronik GmbH**

Georg-Krug-Straße 2  
D-87437 Kempten  
Phone: +49 (0) 831 575900-0  
Fax: +49 (0) 831 575900-72  
Email: [info@s-i-e.de](mailto:info@s-i-e.de)

[www.sontheim-esys.com](http://www.sontheim-esys.com)